

Airborne Sound Insulation according to ISO 140-3 Laboratory measurements

Client: VCE International nv (Belgium).

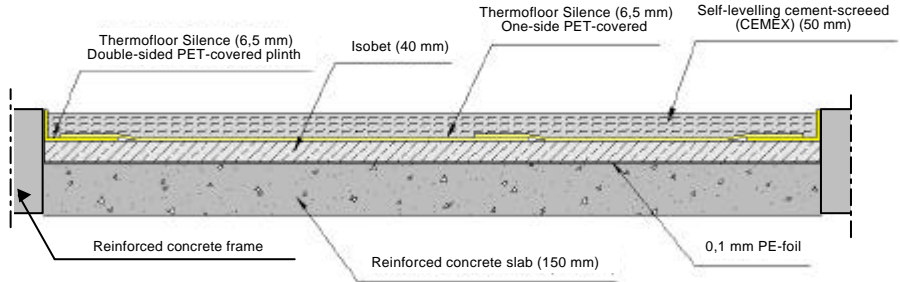
Test date: 28/3/03

Test specimen: 'ISOBET-PLUS' on reinforced concrete slab.

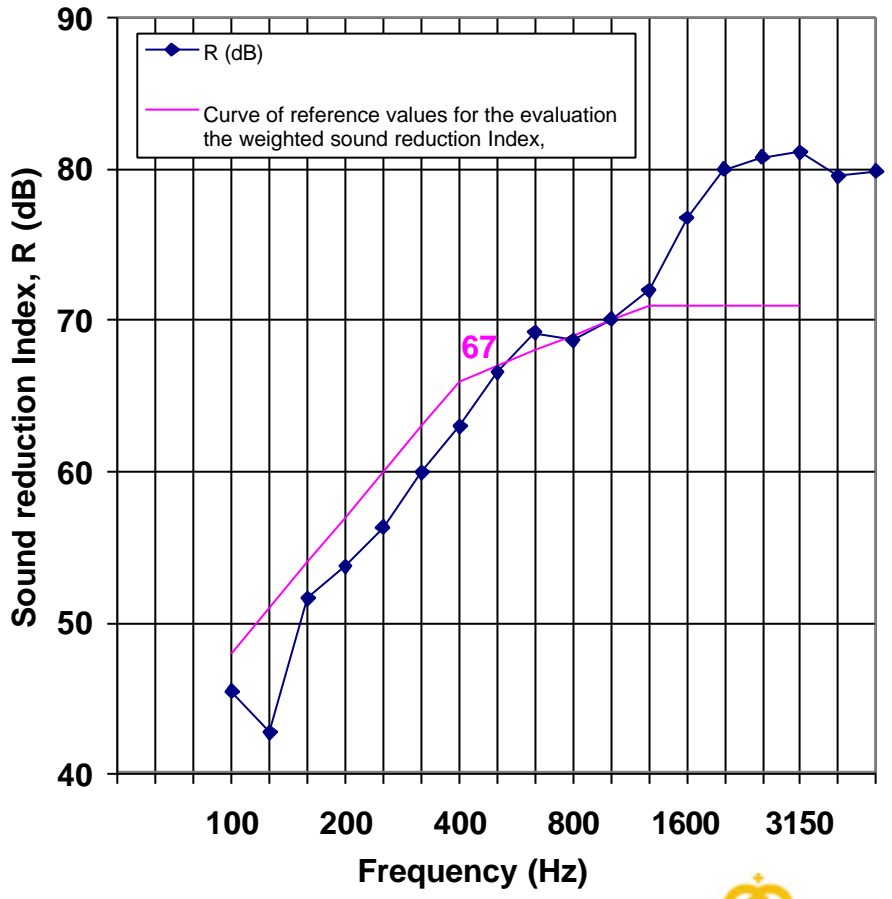
Description of test specimen:

The test specimen consists of a multi-layered covering, 'ISOBET-PLUS', on 15 cm width reinforced concrete slab. The specimen has been mounted inside a reinforced concrete frame and a test aperture of 3,3 x 4,2 m. The curing time of the floor covering has been of 11 days.

Receiving room volume: 64,7m³
 Source room volume: 53,6 m³
 Test specimen area: 13,86 m²
 Mass per unit area estimated: 485 kg/m²
 Air temperature: 14,6 °C
 Air humidity: 67,8 %



f (Hz)	R (dB)
100	45,5
125	42,8
160	51,6
200	53,7
250	56,3
315	59,9
400	63,0
500	66,6
630	69,2
800	68,7
1000	70,1
1250	72,0
1600	76,8
2000	80,0
2500	80,8
3150	81,1
4000	79,5
5000	79,9



Rating according to:	ISO 717-1:1996	R _w (C;C _{tr}):	67 (-2 ; -8) dB
	NBE-CA 88	R(A):	65,5 dB(A)
<i>Evaluation based on laboratory measurement results obtained by an engineering method</i>			



No. of result: B130 – 311 - H27 RA

Signature:

Acoustics Area
Managed by

Date: May 15th 2003

