



Impact Sound Insulation according to ISO 140-6 Laboratory measurements

Client: VCE International nv (Belgium).

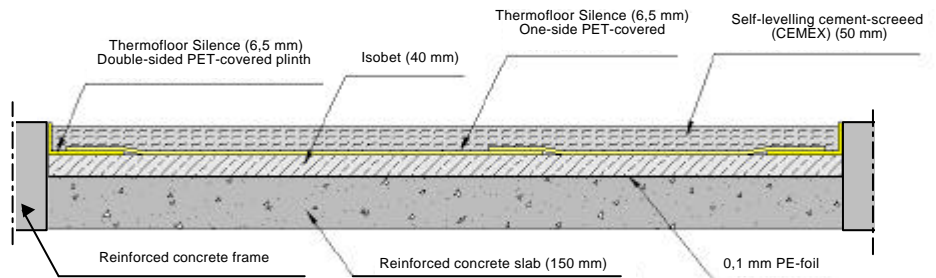
Test date: 31/3/03

Test specimen: 'ISOBET-PLUS' on reinforced concrete slab.

Description of the test specimen:

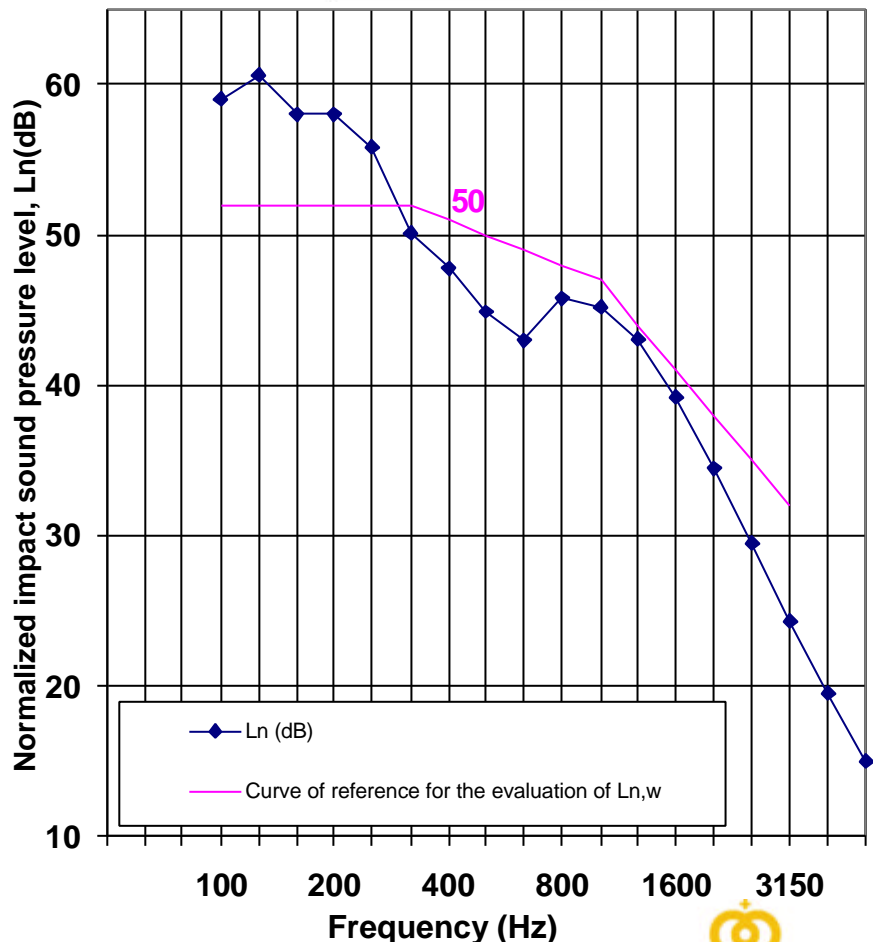
The test specimen consists of a multi-layered covering, 'ISOBET-PLUS' on 15 cm width reinforced concrete slab. The specimen has been mounted inside a reinforced concrete frame and a test aperture of 3,3 x 4,2 m. The curing time of the floor covering has been of 14 days.

Receiving room volume: 64,7m³
Source room volume: 53,6 m³
Test specimen area: 13,86 m²
Mass per unit area estimated: 485 kg/m²



Air temperature: 15,4 °C
Air humidity: 63,1 %

f (Hz)	Ln(dB)
100	59,0
125	60,6
160	58,0
200	58,0
250	55,8
315	50,1
400	47,8
500	44,9
630	43,0
800	45,8
1000	45,2
1250	43,1
1600	39,2
2000	34,5
2500	29,5
3150	24,3
4000	19,5
5000	15,0



Rating according to: ISO 717-2:1996 Ln,w (C₁): 50 (1) dB
NBE-CA 88 Ln(A): 55,4 dB(A)
Evaluation based on laboratory measurement results obtained by an engineering method



No. of result: B130 – 311 - H27 RI

Signature:

Acoustics Area
Managed by

Date: May 15th 2003

