

Reduction of impact sound pressure level according to ISO 140-8 Laboratory measurements

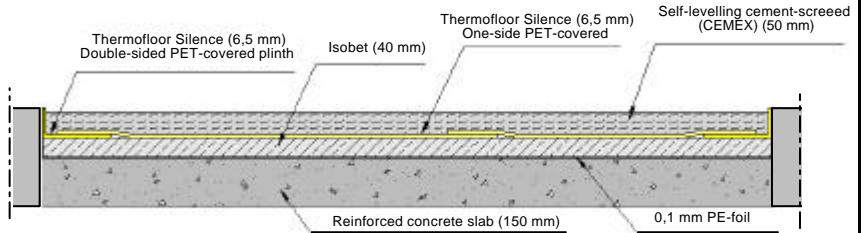
Client: VCE International nv (Belgium).

Test date: 6/5/03

Test specimen: 'ISOBET-PLUS'.

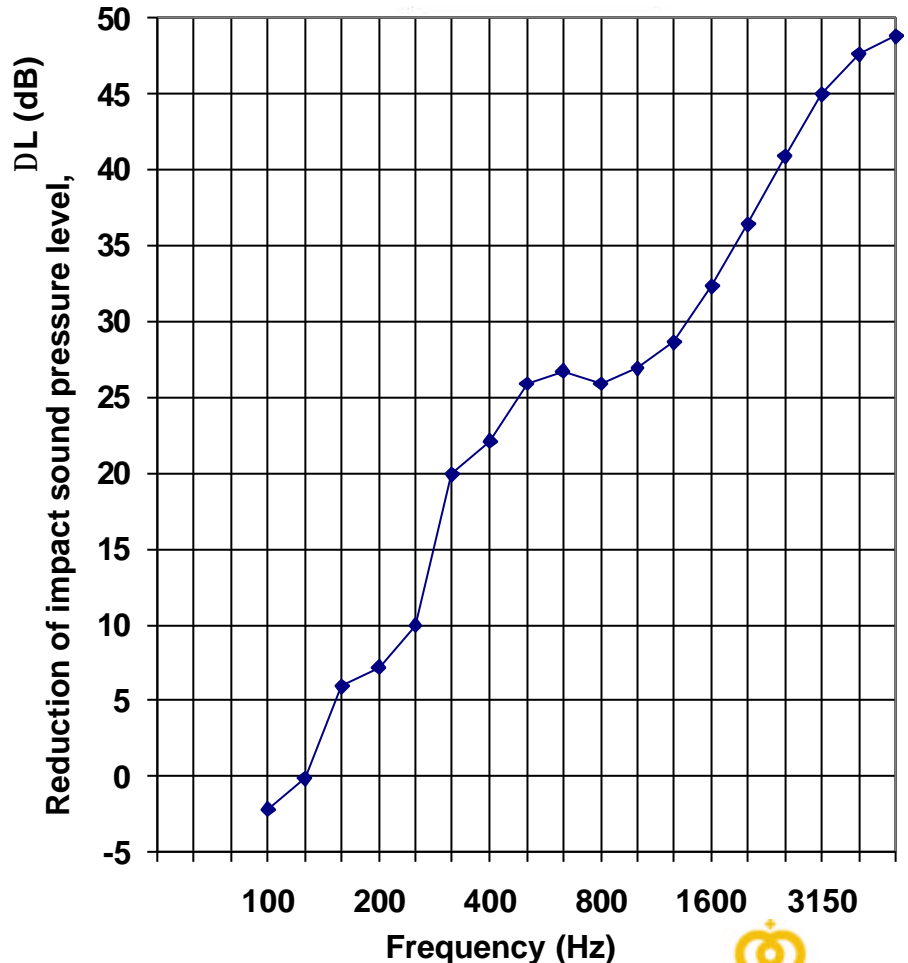
Description of the test specimen:

The test specimen consists of a multi-layered covering, 'ISOBET-PLUS'. The specimen has been mounted on 15 cm width reinforced concrete slab and a test aperture of 3,3x4,2 m. The curing time of the test specimen has been of 14 days.



Receiving room volume: 64,7m³
 Source room volume: 53,6 m³
 Test specimen area: 13,86 m²
 Mass per unit area estimated: 110 kg/m²
 Air temperature: 16,2 °C
 Air humidity: 62,3 %

f (Hz)	L _{n,o} (dB)	DL (dB)
100	56,8	-2,2
125	60,5	-0,1
160	63,9	5,9
200	65,2	7,2
250	65,8	10,0
315	70,0	19,9
400	69,9	22,1
500	70,8	25,9
630	69,7	26,7
800	71,7	25,9
1000	72,1	26,9
1250	71,7	28,6
1600	71,5	32,3
2000	70,9	36,4
2500	70,4	40,9
3150	69,3	45,0
4000	67,1	47,6
5000	63,8	48,8



Rating according to ISO 717-2:1996:	ΔL _w (C _{l,Δ}):	22 (-13) dB
	L _{n,r,w} (C _{l,r}):	56 (2) dB
<i>These results are based on test made with an artificial source under laboratory conditions (engineering)</i>		



No. of result: B130 – 311 - H27 MRI
 Date: May 15th 2003

Signature: _____
 Acoustics Area
 Managed by

